



RB521CS-30 Schottky Barrier Diode

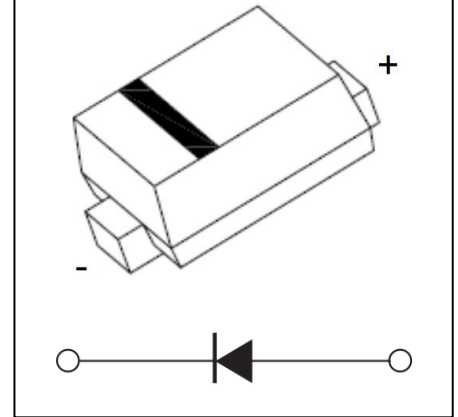
Feature

- Small Surface Mounting Type
- Low IR
- High Reliability

MARKING:



SOD-923



ABSOLUTE MAXIMUM RATINGS (T_A=25°C unless otherwise noted)

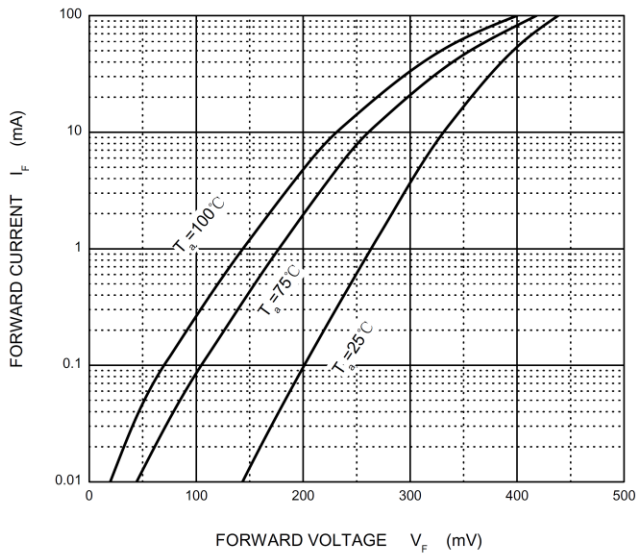
Parameter	Symbol	Value	Unit
DC Reverse Voltage	V _R	30	V
Mean Rectifying Current	I _O	0.1	A
Non-Repetitive Peak Forward Surge Current @ t=8.3ms	I _{FSM}	0.5	A
Power Dissipation	P _D	0.1	W
Thermal Resistance from Junction to Ambient	R _{θJA}	1000	°C/W
Junction Temperature	T _J	125	°C
Storage Temperature Range	T _{STG}	-55 ~ +150	°C

ELECTRICAL CHARACTERISTICS (T_A=25°C unless otherwise noted)

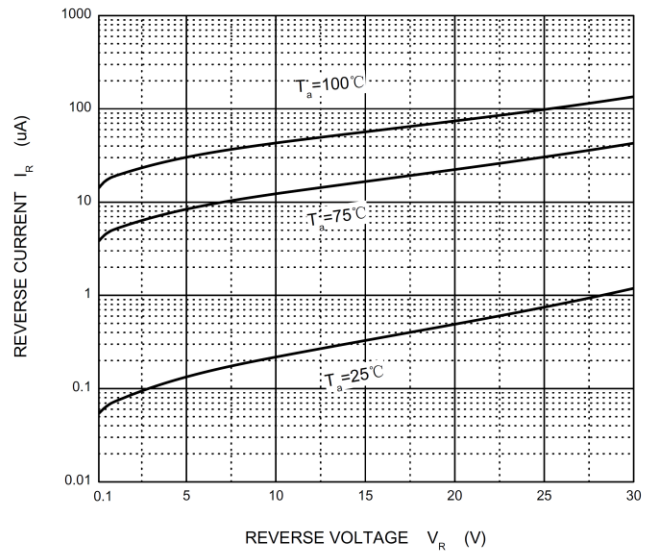
Parameter	Symbol	Test Condition	Min	Type	Max	Unit
Reverse Voltage	V _{BR}	I _R = 100uA	30			V
Forward Voltage	V _F	I _F = 10mA			0.37	V
		I _F = 100mA			0.5	V
Reverse Current	I _R	V _R = 10V			2	μA

Typical Characteristics

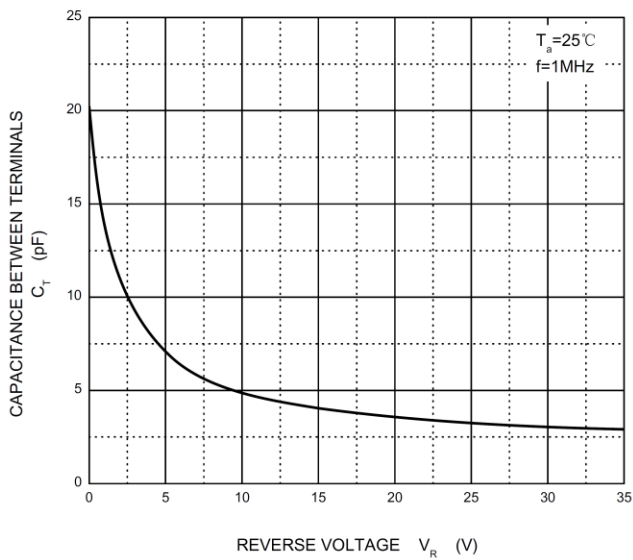
Forward Characteristics



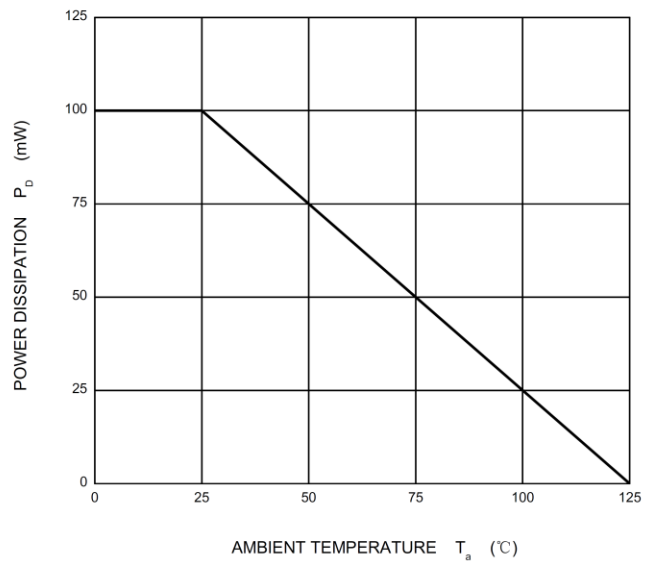
Reverse Characteristics

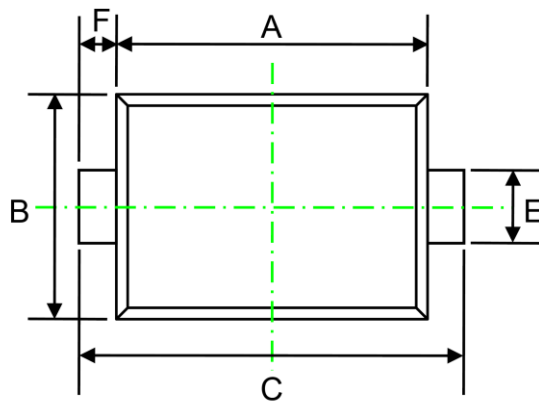


Capacitance Characteristics

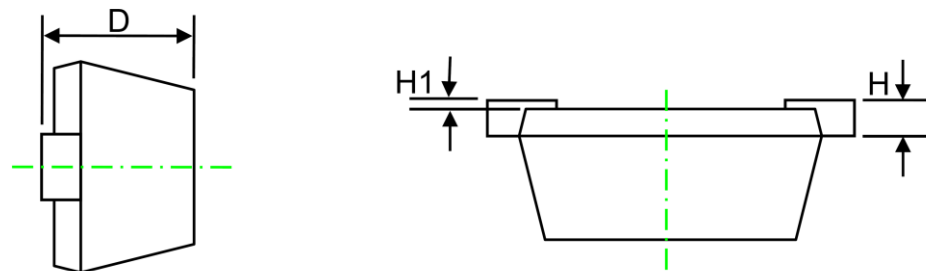


Power Derating Curve



SOD-923 Package Outline Dimensions


TOP VIEW
 [顶视图]



SIDE VIEW
 [侧视图]

Symbol	Dimensions In Millimeters		Dimensions In Inches	
	Min.	Max.	Min.	Max.
A	0.700	0.900	0.028	0.035
B	0.500	0.700	0.020	0.028
C	0.900	1.100	0.035	0.043
D	0.320	0.520	0.013	0.020
E	0.150	0.250	0.006	0.010
F	0.050	0.150	0.002	0.006
H	0.060	0.200	0.002	0.008
H1	0.000	0.050	0.000	0.002

Attention:

- GreenPower Electronics reserves the right to improve product design function and reliability without notice.
- Any and all semiconductor products have certain probability to fail or malfunction, which may result in personal injury, death or property damage. Customer are solely responsible for providing adequate safe measures when design their systems.
- GreenPower Electronics products belong to consumer electronics or other civilian electronic products.